

NOTES:

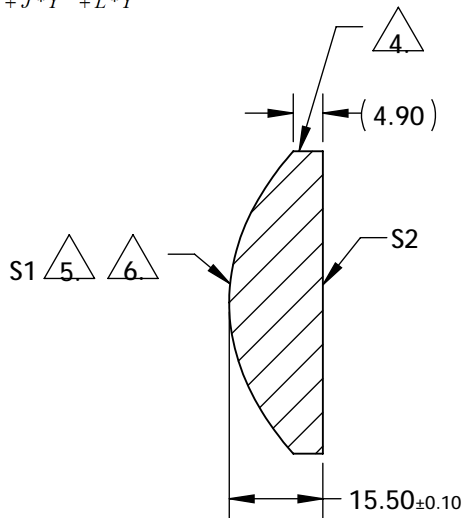
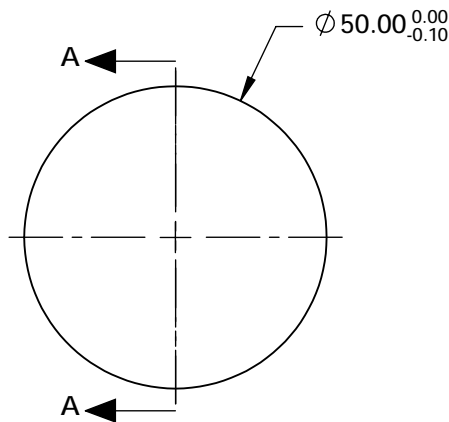
1. SUBSTRATE:
S-LAH64
2. CENTERING TOLERANCE (AT 587.6nm):
BEAM DEVIATION (HALF ANGLE): <3 arcmin
3. COATING (APPLY ACROSS COATING APERTURE)
S1: NIR (600-1050nm)
Ravg < 0.5% @ 600 - 1050nm @ ±30° AOI
Rabs < 1.5% @ 600 - 1050nm @ ±30° AOI
S2: NIR (600-1050nm)
Ravg < 0.5% @ 600 - 1050nm @ ±30° AOI
Rabs < 1.5% @ 600 - 1050nm @ ±30° AOI

4. EDGES: FINE GROUND

5. ASPHERIC FIGURE ERROR: 0.75 µm RMS

6. ASPHERIC SURFACE DESCRIBED BY (REF. COEFFICIENT TABLE):

$$Z_{ASPH}(Y) = \frac{(\frac{1}{RADIUS}) * Y^2}{1 + \sqrt{1 - (1+k) * (\frac{1}{RADIUS})^2 * Y^2}} + D * Y^2 + E * Y^4 + F * Y^6 + G * Y^8 + H * Y^{10} + J * Y^{12} + L * Y^{14}$$



SECTION A-A

COEFFICIENT TABLE 6.

| COEFFICIENT | S1 |
|---------------|----------------|
| SEMI-DIAMETER | 2.500000E+01 |
| (1/RADIUS) | 3.21802092E-02 |
| k | -1.004000E+00 |
| D | 0.000000E+00 |
| E | 1.519690E-06 |
| F | -8.640700E-11 |
| G | -1.433620E-13 |
| H | -4.469940E-17 |
| J | 3.129480E-20 |
| L | 0.000000E+00 |

| | S1 | S2 |  Edmund Optics® | | | |
|-----------------|----------------------|----------------------|--|--------|-------|--------------|
| SHAPE | CONVEX | PLANO | BFL @ 780nm: 31.28 | | | |
| RADIUS | 31.075 | INFINITY |  | | | |
| SURFACE QUALITY | 40-20 | 40-20 | | | | |
| CLEAR APERTURE | 45 mm | 45 mm | TITLE | | | |
| BEVEL | PROTECTIVE AS NEEDED | PROTECTIVE AS NEEDED | 50mm Dia., 0.63 NA, 600-1050nm Coated, NIR Aspheric Lens | | | |
| ALL DIMS IN | | | mm | DWG NO | 16288 | SHEET 1 OF 1 |