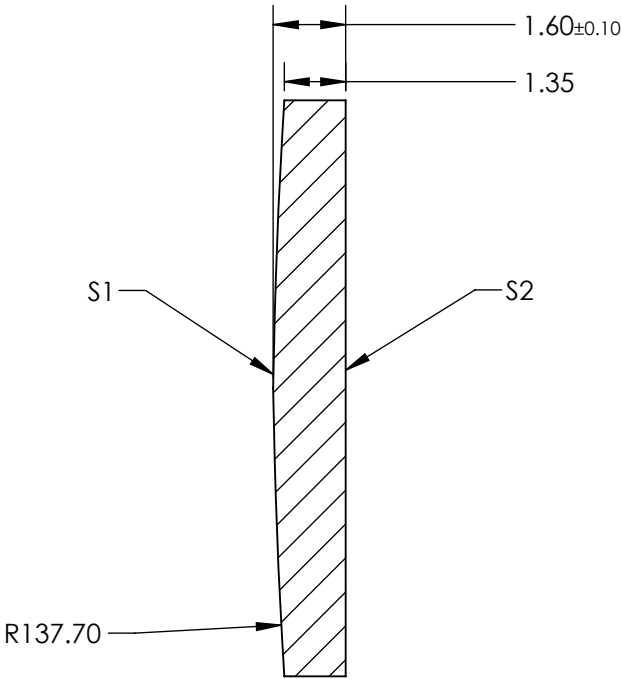
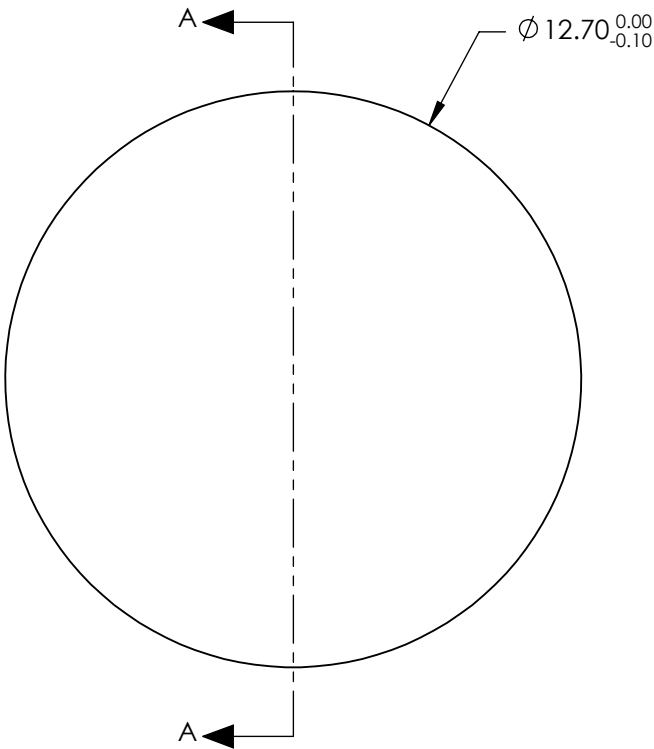
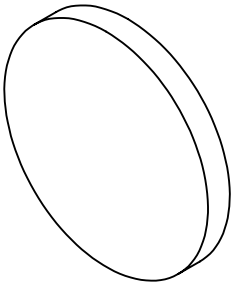


NOTES:

- 1. SUBSTRATE: IR GRADE FUSED SILICA
- 2. COATING:  
 $S1 \text{ \& } S2: R(AVG) \leq 0.5\% \text{ FROM } 350\text{-}700\text{nm @ } 0^\circ \text{ AOI}$
- 3. CENTERING: < 3 ARCMIN
- 4. RoHS: COMPLIANT



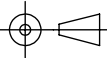
SECTION A-A

**FOR INFORMATION ONLY:  
DO NOT MANUFACTURE  
PARTS TO THIS DRAWING**

SPECIFICATIONS SUBJECT TO CHANGE WITHOUT NOTICE  
DIMENSIONS ARE FOR REFERENCE ONLY

	S1	S2
SHAPE	CONVEX	PLANO
SURFACE QUALITY	20-10	20-10
CLEAR APERTURE	Ø11.43	Ø11.43
BEVEL	PROTECTED AS NEEDED	PROTECTED AS NEEDED

THIRD ANGLE  
PROJECTION



ALL DIMS IN

mm

**EO**® **Edmund Optics®**

TITLE

12.7mm Diameter x 300mm FL, 350-700nm,  
Ultrafast Thin PCX Lens

DWG NO

22640

SHEET  
8 OF 19