

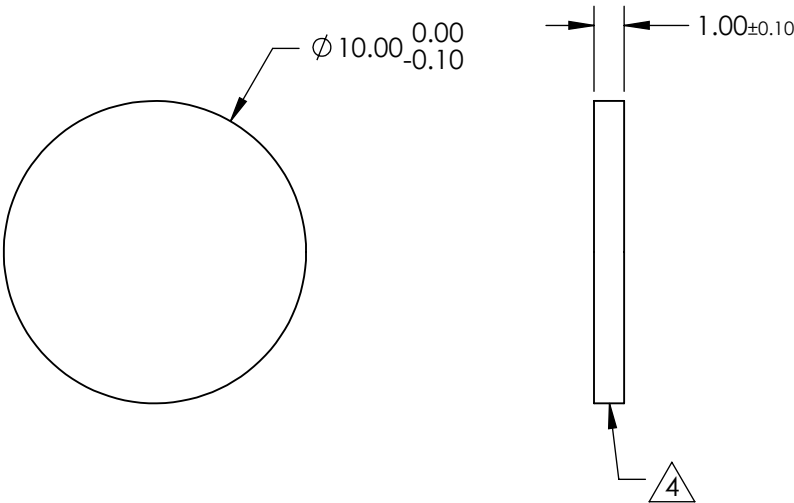
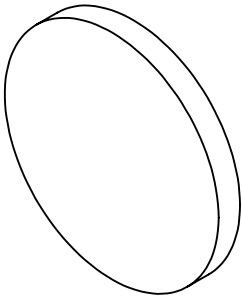
NOTES:  
1. SUBSTRATE: Fused Silica (Corning 7980)

2. S2 TO BE PARALLEL WITH S1 TO WITHIN <1 ARCMIN

3. COATING (APPLY ACROSS CLEAR APERTURE)  
S1 & S2: R(ABS) ≤1.0% FROM 250 - 425nm  
R(AVG) ≤0.75% FROM 250 - 425nm  
R(AVG) ≤0.5% FROM 370 - 420nm


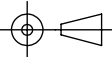
4. FINE GRIND SURFACE

5. ROHS COMPLIANT



**FOR INFORMATION ONLY:  
DO NOT MANUFACTURE  
PARTS TO THIS DRAWING**

SPECIFICATIONS SUBJECT TO CHANGE WITHOUT NOTICE  
DIMENSIONS ARE FOR REFERENCE ONLY

|                 |                     |                     |  |       |  |                  |
|-----------------|---------------------|---------------------|--|-------|--|------------------|
|                 | S1                  | S2                  |  Edmund Optics® |       |  |                  |
| SHAPE           | PLANO               | PLANO               |                 | TITLE | 10mm Dia., 1mm Thick, NIR II Coated, $\lambda/4$ Fused Silica Window |                  |
| SURFACE QUALITY | 40-20               | 40-20               |  |       |  |                  |
| CLEAR APERTURE  | $\phi 9.00$         | $\phi 9.00$         | ALL DIMS IN  | mm    | DWG NO   | 25634            |
| BEVEL           | PROTECTED AS NEEDED | PROTECTED AS NEEDED |  |       |  | SHEET<br>2 OF 26 |