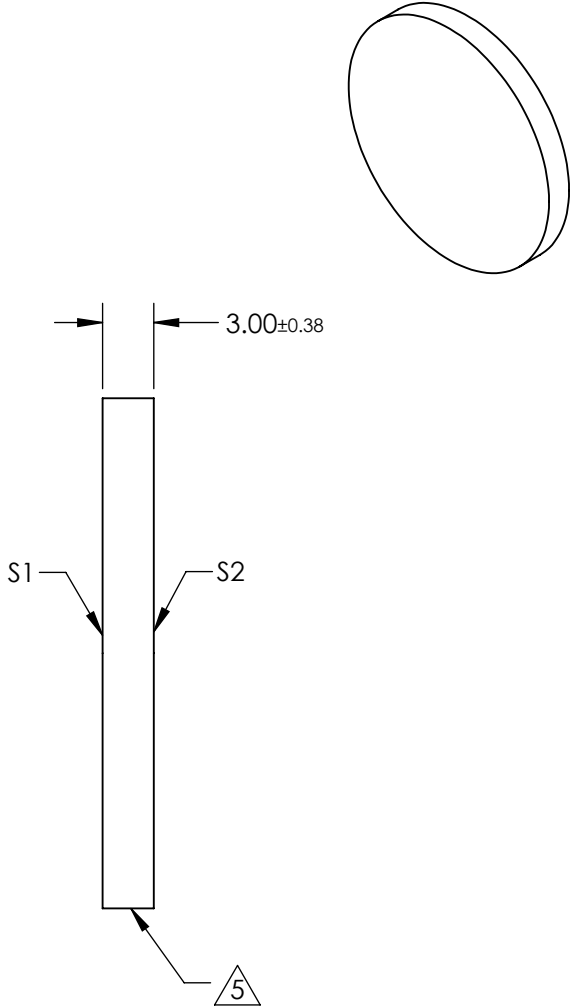
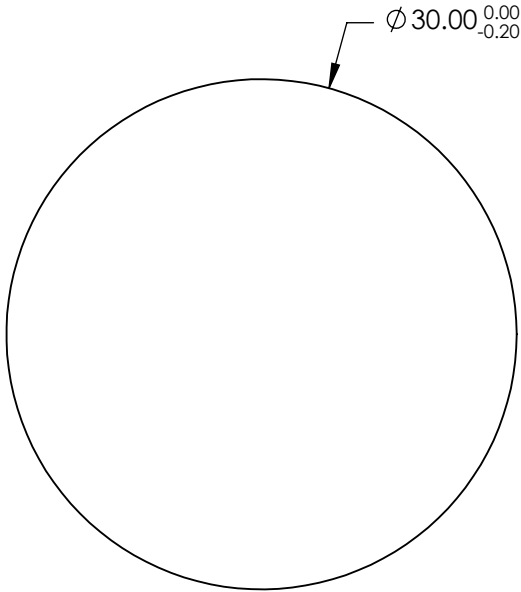


- NOTES:
- 1. SUBSTRATE: FUSED SILICA
  - 2. RoHS: COMPLIANT
  - 3. SURFACE S2 TO BE PARALLEL TO SURFACE S1 TO WITHIN <5 ARCMIN
  - 4. COATING (APPLY ACROSS CLEAR APERTURE)  
S1 & S2: Ravg <0.5% @ 350 - 700nm

5. FINE GRIND SURFACE



**FOR INFORMATION ONLY:  
DO NOT MANUFACTURE  
PARTS TO THIS DRAWING**

SPECIFICATIONS SUBJECT TO CHANGE WITHOUT NOTICE  
DIMENSIONS ARE FOR REFERENCE ONLY

	S1	S2
SHAPE	PLANO	PLANO
SURFACE ACCURACY	1λ	1λ
SURFACE QUALITY	60 - 40	60 - 40
CLEAR APERTURE	∅ 27	∅ 27
BEVEL	PROTECTED AS NEEDED	PROTECTED AS NEEDED

THIRD ANGLE  
PROJECTION

ALL DIMS INmm

Edmund Optics®

TITLE

30mm Dia. 3mm Thick VIS-EXT Coated, 1λ  
Fused Silica Widow

DWG NO

25202

SHEET

17 OF 52