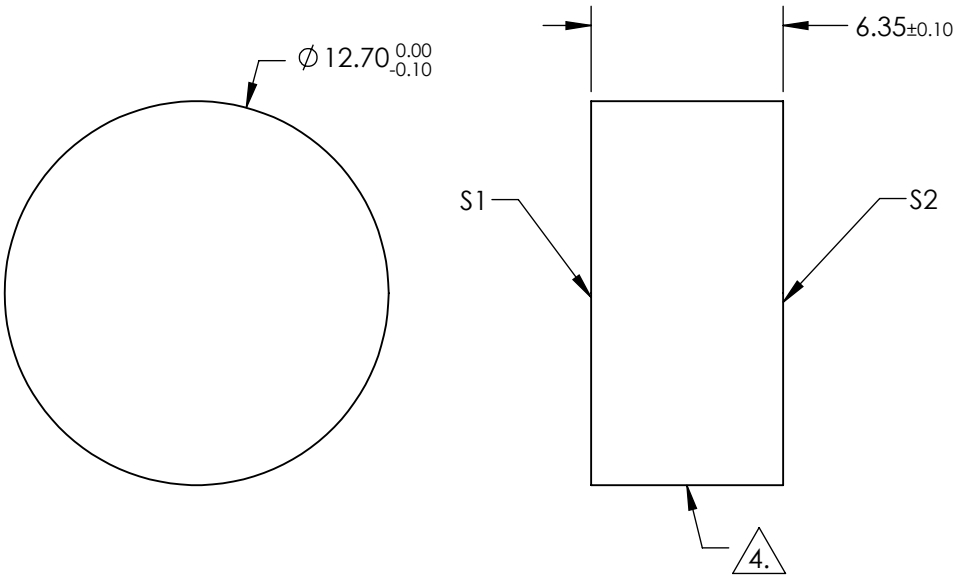
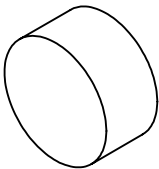



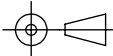
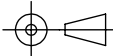
NOTES:

1. SUBSTRATE:
FUSED SILICA
2. SURFACE S2 TO BE PARALLEL TO SURFACE S1 TO WITHIN <3 ARCmin
3. COATING (APPLY ACROSS CLEAR APERTURE)
S1: R(abs) > 99.90% @ 920nm @ 45° AOI
R(avg) > 99.6% @ 820 - 1020nm @ 45° AOI
- S2: NONE
4. FINE GRIND SURFACE
5. POWER, IRREGULARITY, AND SURFACE QUALITY SPECIFICATIONS APPLY
ACROSS CLEAR APERTURE
6. CLEAR APERTURE AND COATING APERTURE ARE CENTERED ON SURFACES



**FOR INFORMATION ONLY:
DO NOT MANUFACTURE
PARTS TO THIS DRAWING**

SPECIFICATIONS SUBJECT TO CHANGE WITHOUT NOTICE
DIMENSIONS ARE FOR REFERENCE ONLY

	S1	S2	 Edmund Optics®				
SHAPE	PLANO	PLANO					
SURFACE QUALITY	10 - 5	COMMERCIAL POLISH					
SURFACE FLATNESS	$\lambda/10$	N/A					
CLEAR APERTURE	Ø 11.43	N/A	THIRD ANGLE PROJECTION		TITLE	920nm Laser Line Mirror, 45° AOI, 12.7mm Dia., 6.35mm Thick	
COATING APERTURE	Ø 11.43	N/A					
BEVEL	PROTECTED AS NEEDED	PROTECTED AS NEEDED	ALL DIMS IN	mm	DWG NO	27557	SHEET 33 OF 86