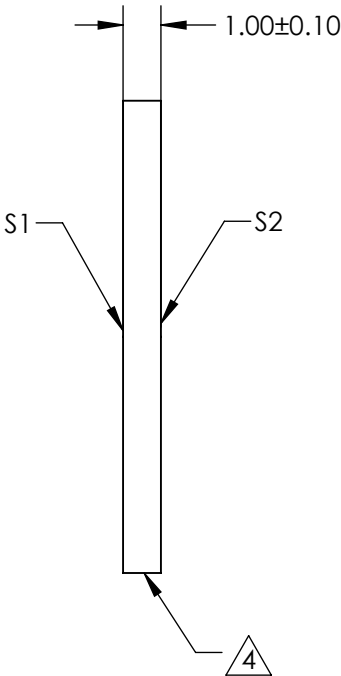
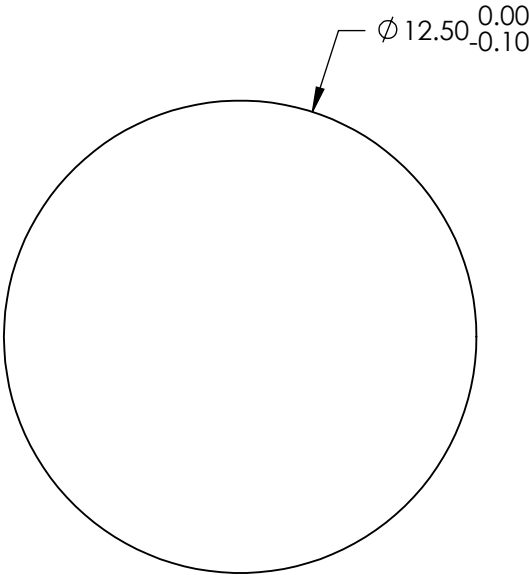
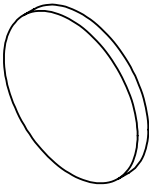


NOTES:

- 1. SUBSTRATE:
FUSED SILICA (CORNING 7980)
- 2. S1 TO BE PARALLEL WITH S2 TO WITHIN <1 ARCMIN
- 3. COATING (APPLY ACROSS CLEAR APERTURE)
S1 & S2: VIS-NIR (400-1000nm)
R(ABS) ≤0.25% @ 880nm
R(AVG) ≤1.25% @ 400 - 870nm
R(AVG) ≤1.25% @ 890 - 1000nm
- 4. FINE GRIND SURFACE
- 5. ROHS COMPLIANT



**FOR INFORMATION ONLY:
DO NOT MANUFACTURE
PARTS TO THIS DRAWING**

SPECIFICATIONS SUBJECT TO CHANGE WITHOUT NOTICE
DIMENSIONS ARE FOR REFERENCE ONLY

	S1	S2
SHAPE	PLANO	PLANO
SURFACE QUALITY	40 - 20	40 - 20
CLEAR APERTURE	Ø 11.25	Ø 11.25
BEVEL	PROTECTED AS NEEDED	PROTECTED AS NEEDED

THIRD ANGLE
PROJECTION

ALL DIMS IN mm

EO® **Edmund Optics®**

TITLE 12.5mm Dia., 1mm Thick, VIS-NIR Coated, λ/4
Fused Silica Window

DWG NO 72346 SHEET 12 OF 84